

Magnetotelluric research, December 2015, mission: “Federation of Damanhur”, Piedmont, Italy (Partial, the most interesting findings¹)

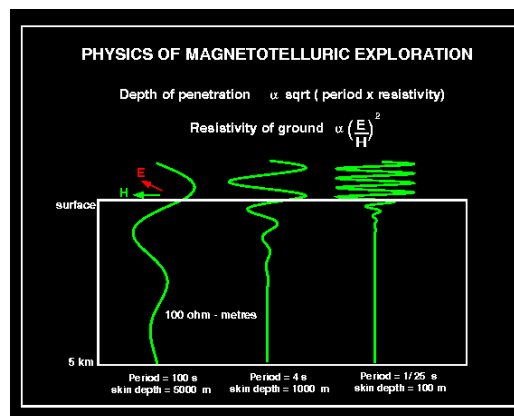
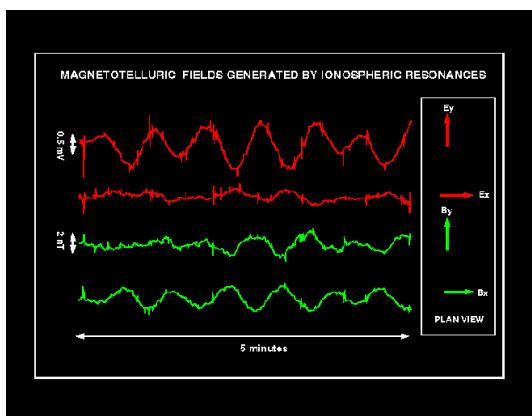
Equipment:

1. Teslameter TM 40 [$H_{50\text{Hz}}$, nT]
2. Trifield meter, 100XE [H , mG; E , V/m]
3. Digital multimeter Mastech MS8229 [T , °C; Hum , %; Noi , dBrel]
4. VF-Broadband amplifier, IB Mraz, “E”-sensor: rod antenna, $l = 30$ cm; “H”- sensor: open coil antenna; “M”-sound sensor: “Knowles” Piezo Ceramic ST Microphone (BL series)
5. Digital storage oscilloscope with FFT, 3202A, 200 MHz, 1GSa/sec
6. S-meter, Bedini version of Dea/Faretto detector, IB Mraz, [S_c , Ampl., % deflection]
7. Experimental life energy meter, Heliognosis model LM3, [O_r , Range, Fine, Coarse, % deflection]

Note 1: EM spectrum varies slightly, the signals are changeable in amplitude and frequency, except ordinary signals generated by measuring equipment (Inverter/ Oscilloscope switch + sampling rate, etc).

Measurement Method:

Magneto telluric Method /ref. 1/ is an electromagnetic method that measures variations in the earth's surface electromagnetic fields at different frequencies.



It samples the electric and magnetic fields in the low (IF-Audio-UF) frequency range. Sources of the AMT signals may be either artificial or natural.

Solar energy and lightning cause natural variations in the earth's magnetic field, inducing electric currents (known as telluric currents) under the Earth's surface. Earth currents arise from both natural and man-made sources, including the magma in the earth's core and the normal distribution and use of electricity. Combined, these phenomena create strong MT source signals over the ULF/LF frequency spectrum.

MT measurements can investigate depths down to hundreds of kilometers. Greater depth requires measuring lower frequencies, which in turn requires longer recording times. Very deep, very long-period measurements (mid-crust through upper mantle depths), may require recordings of several days to weeks or more to obtain satisfactory data quality. AMT is a higher-frequency magneto telluric technique for shallower investigations. While AMT has less depth penetration than MT, AMT measurements often take only about one hour to perform (but deep AMT measurements during low-signal strength periods may take up to 24 hours) and use smaller and lighter magnetic sensors.

Magnetic fields in the frequency range of 1 Hz to approximately 20 kHz are part of the audio-magneto telluric (AMT) range. These are parallel to the Earth surface and move towards the Earth's centre. This large frequency band allows for a range of depth penetration from several meters to several kilometers below the Earth's surface. Due to the nature of magneto telluric source, the waves generally fluctuate in amplitude height. Long recording times are needed to ascertain usable reading due to the fluctuations and the low signal strength.

The multidirectional MT sounding, performed on different locations can clearly indicate a different ratio of the electric to magnetic field and their phase shifting caused by the different speeds of propagation, pointing in that way to different subsurface areas mechanical, magnetic and electric conductivity, i.e. its anisotropy and in fact - its structure.

¹ Complete measurements data as well as 428 recordings of Fast Fourier Transform analysis of the Energetic field frequency spectrums - taken on 13 locations and 13 partial measurement analysis are stored in the G.Marjanovic database.

The research conducted in “Federation of Damanhur”, Italia, from 20 to 21 December 2015, that include the recording of electromagnetic and mechanical energy spectra, were performed on magnetotelluric method in the frequency range from extremely low to medium frequencies (25 mHz – 50 kHz) for electric and/or magnetic phenomena.

Measuring of mechanical vibrations covers an area of infrasound, audio and ultrasound range. For these measurements we used the conventional devices numbered as 1. to 5. in the list of measuring equipment.

In addition to these measurements the detection of the presence of scalar fields was performed by "S-meter" (6). Investigations of unconventional energy fields, as “Orgone energy” is e.g., was carried out by special alternate energy device (Eq. 7.) that is intended for scientific research into life processes.

Furthermore, at each measuring point control parameters were measured: a) presence and intensity of the "EM smog" caused by power network (50 Hz); strength of the dynamic magnetic (b), dynamic electric (c) fields and radio waves strength (d); temperature (e), humidity (f) and noise (g).

Complete measurement recordings are stored in my database but in this paper we introduce only the most interesting findings just as a illustration of ours conclusions.

Measurements:

Location 1: “Ritual circle”, 20.12.2015, 10.53 h.



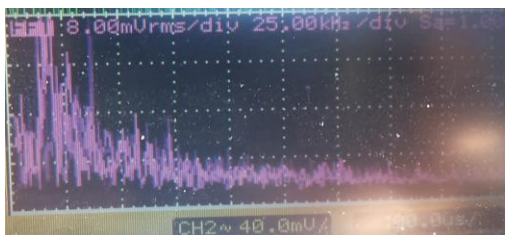
Measured values:

$H_{50\text{Hz}} = 4 \text{ nT}$, $H = 0.6 \text{ mG}$, $E = 70 \text{ V/m}$, $T = 20.8 \text{ }^\circ\text{C}$, $\text{Hum} = 20 \%$, $\text{Noi} = +1.2 \text{ dBrel}$, $S_c = 10,2$; $O_r = 100,3,4,90$

Note 2: Measurement was done at the periphery of Ritual circle, out of the “protective line”.

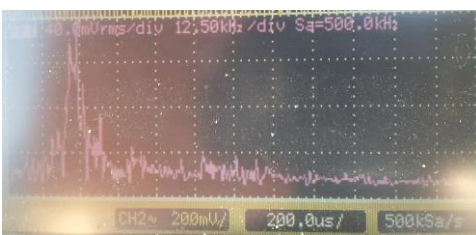
Characteristic spectrums:

1. “E” field [25 kHz/div], location 1:



22.5 [kHz]

2. “H” field [12.5 kHz/div], location 1:



22.5 [kHz]

3. E” field [12.5 kHz/div],
Baseline, Belgrade, Serbia



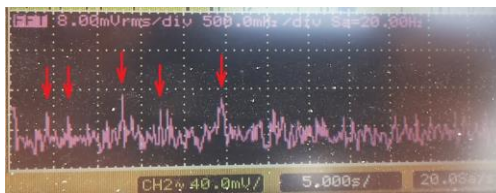
10, 21.2, 26, 37.5, 46, 52 [kHz]

4. “Mic” [1.25 Hz/div], location 1:



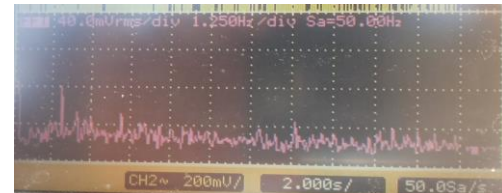
1.6, 2.5, 4.2, **7.7** [Hz]

5. “E” field [500 mHz/div], location 1:



0.4, 0.65, 1.25, 1.7, 2.4 [Hz]

6. “S” field [1.25 Hz/div], location 1:



1.6 [Hz]

Measurement analysis of ambient fields at the location 1, “Ritual circle”:

- Registered dynamic electric field: $E = 70 \text{ V/m}$ is much higher than usual ($\sim 20 \text{ V/m}$).
- Increased noise level, $\text{Noi} = +1.2 \text{ dBrel}$, is the result of ceremonial activities.

- Experimental life energy measurement on this location (Eq.7, LM 3) show quite high orgon energy level ($O_r=90$) which is for 50 % (=90/60) higher than the usual level.

Fast Fourier Transform analysis of the Electric (“E”) field spectrum (pic.1) and magnetic (“H”) field spectrum (pic.2) that display appropriate activities in the area of Very Low Frequency (VLF, 9-30 kHz) and Low Frequency (LF, 30-325 kHz), show that electromagnetic smog signals and signals generated by measuring equipment are significantly repressed and weakened. Electric field spectrum recorded in Belgrade, Serbia (pic. 3) is given as a baseline for comparison. “E” and “H” Signal with frequency of 22.5 kHz (pic. 1,2) are amplified and “widened” equipment signals - as well as harmonics: 42.5 & 21.2 kHz.

As it can be seen on picture 4, a some very low frequency signals of a few hertz were registered. Most interesting of them is a signal of 7.7 Hz that is almost equal to the first frequency from Schumann spectrum of 7.8 Hz!

In the extremely low frequency range of Electric field (pic.5) low but observable signals of 0.4 – 2.4 Hz were recorded. This fact indicates a increased EM activity in the area of brainwave spectrum range ($\lambda, \beta, \gamma, \delta$ waves) which corresponds to the human meditative states. This is also supported with signal of 1.6 Hz (pic.6) that is registered with Scalar field sensor (Eq.list 6).

Although here were not registered a electrodynamic vibration of longitudinal type (that generate Scalar fields), significant equipment signals distorsion and level increase in a VLF magnetic domain (pic. 2), undoubtedly indicates the presence of a subtle energy fields presence at this location.

All measurements conducted on this location, show completely absence of negative energy forms and, at the same time, increased intensity of orgone energy. This facts speak in favor that this location is a healthy and pleasant for people and a very suitable place for mental activities.

Location 2: “Boschetto di conoscenza”, 20.12.2015, 11.55 h.

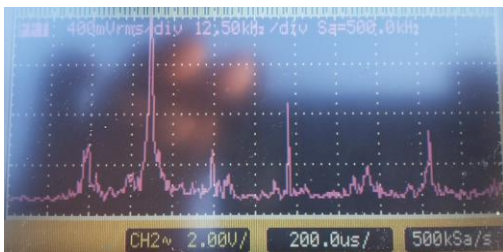
Measured values:

$H_{50Hz} = 4$ nT, $H = 0.7$ mG, $E = 30$ V/m, $T = 22.5$ °C, Hum = 10 %, **Noi = 0 dBrel**, $S_c = 10,5$; $O_r = 100,3,4,95$.

Note 3: Because of a high level of background noise (occasional gunfire, cars ...), measurement of mechanical vibrations (equipment 7) have not been made on this location.

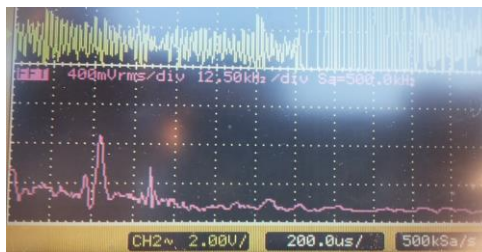
Characteristic spectrums:

7. “E” field [12.5 kHz/div], location 2:



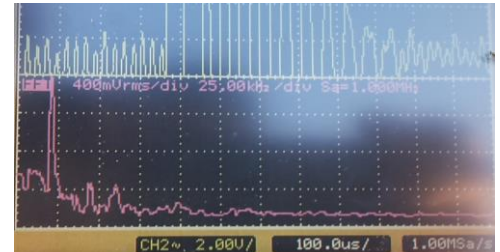
25, 42.5, 62, 85, 128 [kHz]

8. “H” field [12.5 kHz/div], location 2



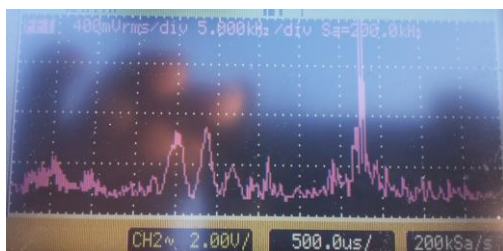
26, 42.5 [kHz]

9. “H” field [25 kHz/div], location 2:



24,45,60 [kHz]

10. “E” field [5 kHz/div], location 2:



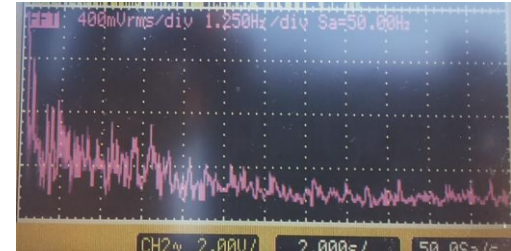
2-10 20, 24 42 [kHz]

11. “H” field [5 kHz/div], location 2:



3-13 23 42 [Hz]

12. “E” field [1.25 Hz/div], location 2:



2 ----- 10 [Hz]

Measurement analysis of ambient fields at the location 2, “Boschetto di conoscenza”:

- Registered dynamic electric field: $E = 30$ V/m is higher than usual (~20 V/m).
- Increased noise level (Noi = 0 dBrel) is the result of the roadway vicinity.
- Experimental life energy measurement on this location (Eq.7, LM 3) show quite high orgon energy level ($O_r=95$)

Clear, “roughly” and “sharp” frequency EM spectrums in the VLF (pic. 7,8) and LF (pic. 9) domain indicate that this zone is a slightly resonant area. However, the absence of a measureable scalar field value can be the result of an inadequate shaping and/or structurelessness of this facility, or - of insufficient sensitivity of used

equipment for concrete subtle energy form.

EM smog suppression and “clarity” of EM spectrum at this location is much smaller than on the location 1 (pic. 9) but it exists. Especially of magnetic component. Yet, EM “clearance” at this location is satisfactory for meditative activities.

The structure of the frequency spectrum in the low frequency domain, for the electric component of 2 to 10 kHz (pic.10) and for magnetic of 3 to 13 kHz (pic.11), indicates the possible presence of a remote water flow of a medium intensity.

In the area of Extremely Low Frequencies for “E” field (pic.4) was registered a moderate chaotic activity in the range of 2 Hz to 10 Hz that are a part of “brainwave spectrum” range. Possible generator of this ELF noise could be /is/ previously mentioned water flow.

Increased noise level (Noi = 0 dBrel) is the result of the roadway vicinity.

Experimental life energy measurement on this location (Eq. 7, LM 3) show quite high orgon energy level ($O_r=95$) which is for 58 % (=95/60) higher than the usual level.

A moderate SMOG clearance and ELF chaotic noise make this place suitable for mental relaxation.

Location 3: “Open Temple”, 20.12.2015, 15.30 h.

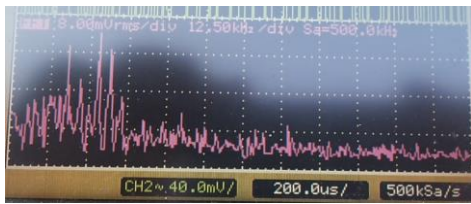
Measured values:

$H_{50Hz} = 4$ nT, $H = 0.6$ mG, $E = 23$ V/m, $T = 17$ °C, Hum = 15 %, Noi = -6 dBrel, $S_c = 10,0$; $O_r = 100,3,4,66$.

Note 4: Measurement was done at the periphery of temple (on the concrete seats).

Characteristic spectrums:

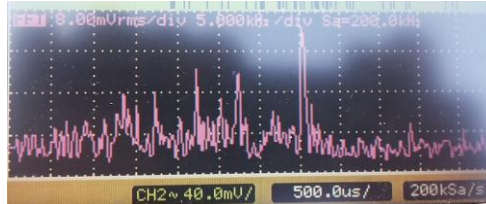
13. “H” field [12.5 kHz/div], location 3:



2, 17,27,32,35

[kHz]

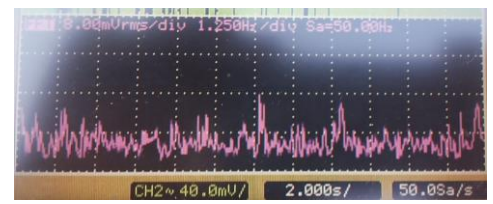
14. “E” field [5 kHz/div], location 3:



13,17, 22,27, 35

[kHz]

15. “H” field [1.25 Hz/div], location 3:



1.5,

5, 6, 7.5, 10.2 [Hz]

Measurement analysis of ambient fields at the location 3, “Open Temple”:

Softly and lightly “blurred” frequency spectrums in all measured ranges indicate that this area is a non-resonant domain. However, it is obvious (Pic. 13) that signals between 2 kHz and 35 kHz are raised and all signals with value over 35 kHz are suppressed in a much greater extent than at the location 2.

In other words, the energetic field at this location is very similar to ambient field at location 1. Both have a structure analogous to the energy fields within the sacral objects (pyramids, churches and alike). Since this is an open space that is not “shaped” the most likely reason may be a presence of a subtle energy flow on this locations caused by some Earth’s mechanisms. Fact that Experimental life energy measurement on this location (Eq. 7, LM 3) show a low (i.e. usual) level of “Orgon energy” presence ($O_r=65$), indicate a very likely possibility of a potential subtle energetic flow on this site. It is either similar - but a weaker than on location 1 – or its qualitative characteristics are a slightly different from those that exist at location 1.

Other reason for the noticeable EM smog suppression and a low value of “orgone energy” may be the fact that the measurements were carried out at the periphery of “Open Temple”.

In the extremely low frequency range of magnetic field (pic. 15) very low, but still observable, brainwave spectrum range signals from 1.5 Hz to 10 Hz were recorded. This fact indicates that a energetic state on this location is very similar to ambient field on the location 1 but – with noticeably lower (weaker) quality.

So even though measurements have not confirmed the existence of subtle energy forms on this site, the absence of negative energy radiation (smog) makes this place suitable for people.

Location 4: “Crystal Spiral”, 21.12.2015, 09.40 h.

Measured values:

$H_{50Hz} = 4$ nT, $H = 0.6$ mG, $E = 28$ V/m, $T = 13$ °C, Hum = 15 %, Noi = -36 dBrel, $S_c = 10,2$; $O_r = 100,3,4,78$.

Note 5: As a **special curiosity** we consider a frequency spectrums recorded in VLF domain before, during and after “**Interpersonal Communication**” achieved through conscious awareness.

Characteristic spectrums:

16. "E" field [12.5 kHz/div], location 4:



5, 17, 20, 35, 40, 42.5 [kHz]

17. "H" field [12.5 kHz/div], location 4:



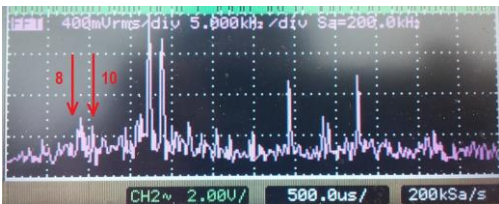
17, 35, 40, 42.5 [kHz]

18. "H" field [25 kHz/div], location 4:



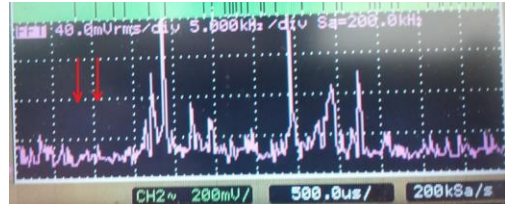
20, 35, 40 [kHz]

19. "E" field [5 kHz/div], location 4:



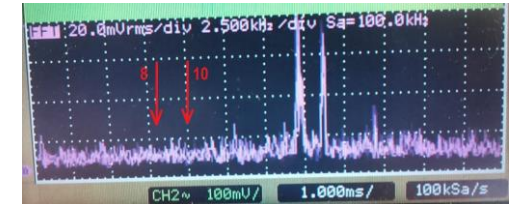
8-10 17, 19 35, 40, 42.5 [kHz]

20. "H" field [5 kHz/div], location 4:



17, 19, 35, 40, 42.5 [kHz]

21. "H" field [2.5 kHz/div], location 4:



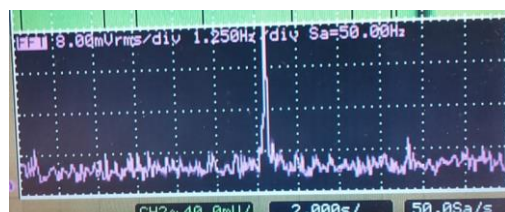
17.2, 19 [kHz]

22. "E" field [1.25 Hz/div], location 4:



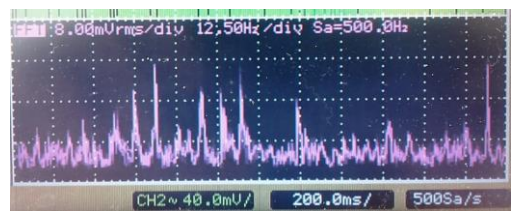
7.8 [Hz]

23. "H" field [1.25 Hz/div], location 4:



7.8 [Hz]

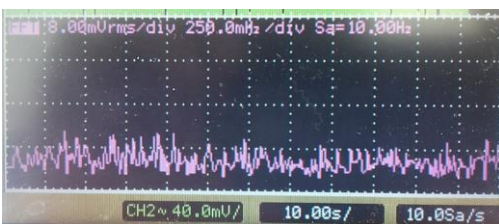
24. "Mic" [12.5 Hz/div], location 4:



7.5 ----- 80 87 [Hz]

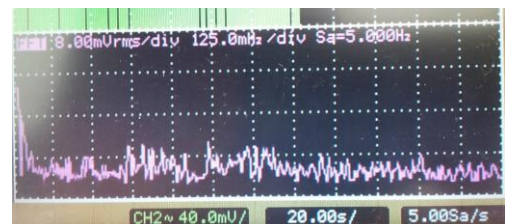
"Interpersonal Communication", 125 mH/div, location 4:

25. "H" field, 10.05 h:



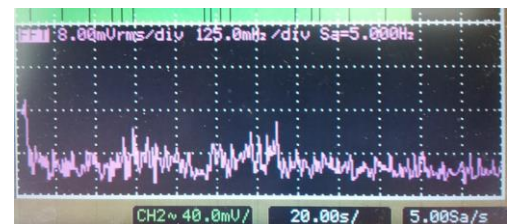
- [Hz]

26. "E" field, 10.09 h:



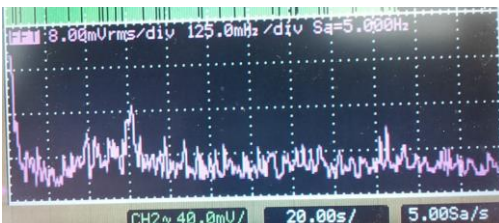
0.3 ----- 1 [Hz]

27. "E" field, 10.10 h:



0.3 ----- 1 [Hz]

28. "H" field, 10.17 h:



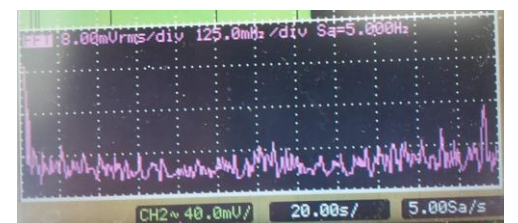
0.3 ----- 1 [Hz]

29. "E" field, 10.36 h:



0.3 ----- 1 [Hz]

30. "H" field, 11.10:



0.3 ----- 1 [Hz]

Measurement analysis of ambient fields at the location 4, "Crystal Spiral":

- Registered dynamic electric field: $E = 28 \text{ V/m}$ is slightly higher than usual ($\sim 20 \text{ V/m}$).
- Noise level is very low ($\text{Noi} = -36 \text{ dBrel}$).
- Experimental life energy measurement on this location (Eq.7, LM 3) show high orgon energy level ($O_r=78$) which is for 30 % ($=78/60$) higher than the usual level.

Dense (“condensed”) and sharp EM frequency spectrum in the domain of VLF domain (pic. 16,17), its “clarity” and EM smog suppression in LF domain (pic.18) are main characteristic of the energy field parameters at this location - indicating that this area has - at least - elementary resonance characteristics. Since this is not a shaped form (mountain, hill ...) the only reason for this effect may be the “crystal spiral” built at this place, its composition with a very specific form created by various crystal structures.

On the picture 19 one can see the presence of the signals with frequency of 8 kHz and 10 kHz in the "E" field domain while the same signals were not recorded in a magnetic ("H" filed) domain (pic. 20). This is even more evident on the picture 21, which is made in a larger "resolution".

This fact – regarding J.C. Maxwell interpretation of “Hertzian” EM waves - can be evidence of longitudinal electrodynamics vibrations that are dominant precondition for the scalar field existence [ref. 2,3].

Low measured value of Scalar field ($S_c = 10,2$) by “S” meter (Eq.6) can be a result of a very low longitudinal “E”-wave intensity (pic.19), physical structurelessness and maybe of insufficient (and/or inadequate) “shaping” of this facility. Regarding fact that existing form and structure of this object is a result of technological principles that are unknown to me – measured values should not, nor have to mean that there is no such (scalar, subtle energy, torsional...) field - but that its “form” is different from the one which can be detected by our equipment. In support of this opinion is the fact that the Experimental life meter (Eq.7) registered the presence of “orgone” energy in significantly increased amount than is a usual level ($O_r=78$).

Another important argument that speaks in favor of exceptional specificity of this site are recordings of electric ("E") and magnetic ("H") fields in the extremely low frequency domain (pic.22, 23) - which clearly shows a presence of a strong signal of 7.8 Hz in both fields spectrums. As it is well known – 7.83 Hz is the fundamental frequency “The Schumann resonances” - a set of spectrum peaks in the extremely low frequency (ELF) portion of the Earth's electromagnetic field spectrum. Schumann resonances are global electromagnetic resonances, generated and excited by lightning discharges in the cavity formed by the Earth's surface and the ionosphere.

The fact that this spectrum is a completely analogous to “Brain wave” spectrum, i.e. the frequency spectrum generated by the human brain in various states of consciousness. This fact points to the uniqueness of this location when it comes to the area of spirituality.

It is more than interesting that we recorded a very low frequency signals, even from the domain of infrasound, from 7 to 80 Hz at this location (Pic. 24). This frequencies also corresponds to the area of Schumann spectrum. Their intensity is very low but are detectable and probably are a result of piezoelectric effects of many and various crystals in this place.

A very special “weirdness” of this site is well illustrated with measurements which were performed before, during and after the “Interpersonal Communication” between Mr. S. O. and Mr. F.T. On the displayed images: pic. 25 to pic. 30, it is quite obvious that “electric” and “magnetic” activities in the extremely low frequency domain: from 0.3 Hz to 1 Hz - that corresponds to a very deep meditative states - are highest during the time of maximal Mr. S.O. concentration, or “Transpersonal communications” duration, i.e. time of his presence in the center of the “Crystal spiral” (pic. 26, 27, 28) that lasted from 10.09 h to 10.17 h - and are the lowest before (pic.25) and after (pic. 29, 30) the “communication”.

The presence of a very strong EM signal with frequency of 7.8 Hz witnessed a very forceful relation of this place with the planet Earth.

Location 5: “Perla (Buche)”, 21.12.2015, 11.36 h.

Measured values:

$H_{50Hz} = 4$ nT, $H = 0.6$ mG, $E = 18$ V/m, $T = 17$ °C, **Hum = 36 %**, $Noi = -26$ dBrel, $S_c = 10,2$; $O_r = 100,3,4,42$.

Characteristic spectrums:

31. “E” field [12.5 kHz/div], location 5:



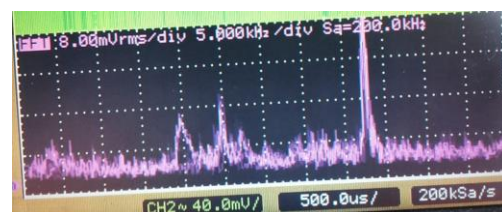
20,25,35,42.5 [kHz]

32. “H” field [12.5 kHz/div], location 5:



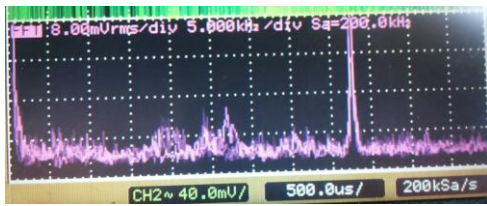
20, 42.5, 60, 80 [kHz]

33. “E” field [5 kHz/div], location 5:



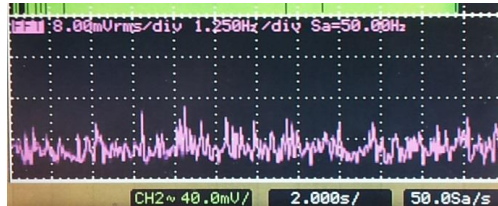
20, 25, 42.5 [kHz]

34. "H" field [5 kHz/div], location 5:



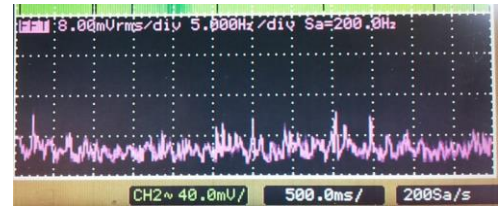
20, 25, 42.5 [kHz]

35. "E" field [1.25 Hz/div], location 5:



2.5, 4.5, 5.2, 6, 7.5, 8, 10, 11 [Hz]

36. "Mic" [5 Hz/div], location 5:



20 ----- 45 [Hz]

Measurement analysis of ambient fields at the location 5, "Perla (Buche)":

- Relatively high humidity is measured on the floor of the cave, which was wet.

Energy spectra registered at this location in the VLF and LF domain (pic.31 and 32) are characterized by high signal sharpness. Electromagnetic "clarity" and EM smog suppression - that are a little bit weaker on this place than is on previous location - are a result of the "Faraday cage" effect.

Signals of 20 and 25 kHz registered on pictures 33 and 34 are generated by measuring equipment - but their "blurred" shape indicates that the measuring probes were placed in the zone of high humidity or very close to the weak water flow or very remote stronger water flow. In this case, it was evident that the reason for the specificity of mentioned signal was - wet soil.

The signal spectrums recorded in the ELF area of "E" fields (pic. 35) indicates a certain - although very little - activity in that parts of the EM spectrum (2,5 Hz - 11 Hz) which probably is a result of resonant effects and standing wave creation. Standing waves occur inside a resonator due to interference between waves reflected back and forth at the resonator's resonant frequency. This is possible because of a high degree of EM cleanliness on this place.

When it comes to mechanical vibration, a extremely low noise (Noi = -26 dBrel) was registered on this place. However, some raised voices in the field of 20 - 45 Hz were registered also, as is shown in Figure 36. For the sound velocity of about 330 m/s corresponding resonant values are 16 and are 7.3 m, which is entirely in accordance with the real dimensions of the cave.

Measured orgone energy value is relatively low ($O_r = 42$) - so this place probably does not have an affirmative influence on bio-energy structures. However, considering aforementioned "cavity resonator effect" and the clearance of EM smog - this place is a very suitable for meditation and reaching a higher states of consciousness.

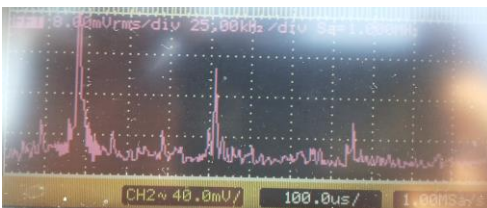
Location 6: "Mantica - Tin", 21.12.2015, 12.30 h.

Measured values:

$H_{50Hz} = 4$ nT, $H = 0.6$ mG, $E = 40$ V/m, $T = 11.3$ °C, Hum = 41 %, Noi = -17 dBrel, $S_c = 10,2$; $O_r = 100,3,4,88$.

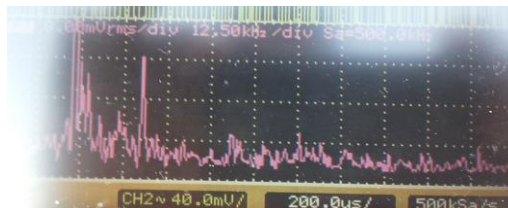
Characteristic spectrums:

37. "E" field [25 kHz/div], location 6:



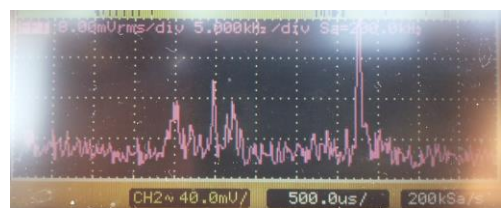
22.5, 45, 130, 215 [kHz]

38. "H" field [12.5 kHz/div], location 6:



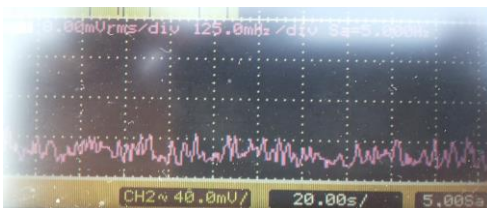
22, 36, 42.5 [kHz]

39. "E" field [5 kHz/div], location 6:



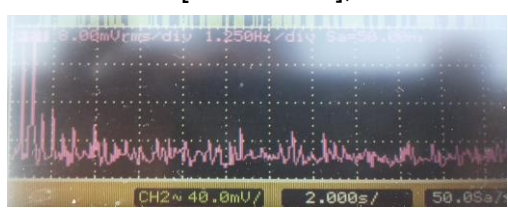
20, 25, 27, 42.5 [kHz]

40. "E" field [125 mHz/div], location 6:



0.2, 0.4, 0.5, 0.75 1 [Hz]

41. "H" field [1.25 Hz/div], location 6:



0.5 - 3.5, 6.6, 8.2, 9.2 [Hz]

42. "H" field [125 mHz/div], location 6:



0.33, 0.65 [Hz]

Measurement analysis of ambient fields at the location 6, "Mantica - Tin":

- Registered dynamic electric field: $E = 40 \text{ V/m}$ is higher than usual ($\sim 20 \text{ V/m}$).
- Experimental life energy measurement on this location (Eq. 7, LM 3) show a higher orgone energy level ($O_r = 88$) which is for 46 % ($=88/60$) higher than the usual level.

Recordings of LF field energy spectra (pic.37) and of VLF area (pic.38) at this location does not indicate the presence of longitudinal electrodynamic vibration - but - relatively high orgone energy value (Eq.7, $O_r = 88$) points to the existence of subtle -energy flows of non-electromagnetic nature. However, electric field frequency spectrum recording in the ELF domain (pic.40) shows a certain "unevenness", i.e. a "orderliness" of the spectrum in the "signal groups" which is associated with the term: "wave packet" – that is a primary "carrier" of information in telecommunications.

The recordings of the magnetic field frequency spectrum displayed on the picture 41 indicates the energetic activities in the field of extremely low frequency: 0.5 - 3.5 Hz, that are also evident in the field of brain-wave range (6.6-9.2 Hz).

On the "H" field recording (pic.42) in the mili-Hertz range clearly shows the presence of a signals on the order of 0.3 Hz and 0.65 Hz, which indicates the subtle-energy specificity of this site - as registered signals are not classical EM vibrations of transversally-vectorial type or so-called Hertzian waves.

In my opinion this signals are a electric/magnetic "shadows" of more complex and dimensionally richer form of vortexial energetic vibrations or so-called "Torsional" fields.

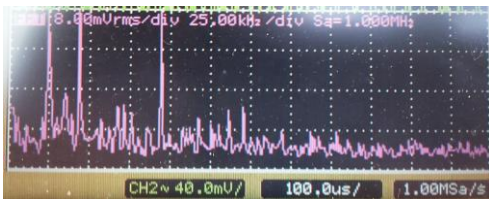
Location 7: "Ottagonale", 21.12.2015, 15.10 h.

Measured values:

$H_{50\text{Hz}} = 4 \text{ nT}$, $H = 0.6 \text{ mG}$, $E = 28 \text{ V/m}$, $T = 14 \text{ }^\circ\text{C}$, $\text{Hum} = 15 \%$, $\text{Noi} = -9 \text{ dBrel}$, $S_c = 10,0$; $O_r = 100,3,4,84$.

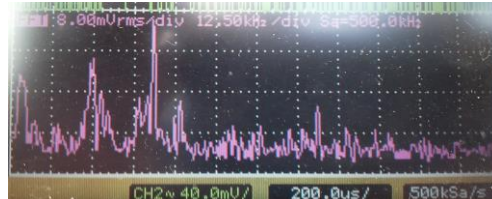
Characteristic spectrums:

43. "H" field [25 kHz/div], location 7:



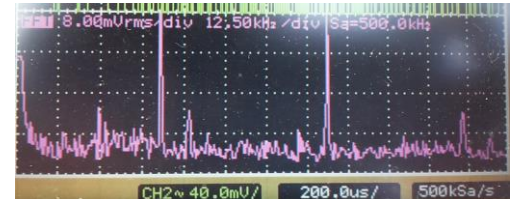
25,35,45,67,95 [kHz]

44. "E" field [12.5 kHz/div], location 7:



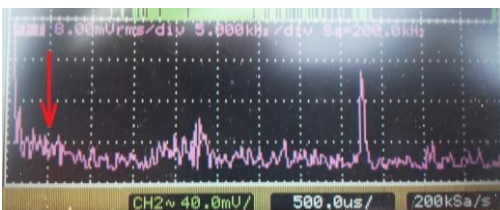
5, 25, 42.5, 50 95 [kHz]

45. "H" field [12.5 kHz/div], location 7:



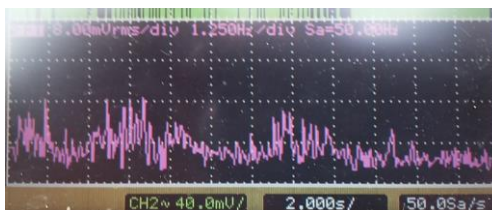
25, 42.5, 93 [kHz]

46. "H" field [5 kHz/div], location 7:



23 42.5 [kHz]

47. "E" field [1.25 Hz/div], location 7:



1.2 3, 4.2, 5.2, 8, 10, 11.7 [Hz]

48. "Mic" [1.25 Hz/div], location 7:



0.5, 2.5, 5, 6 [Hz]

Measurement analysis of ambient fields at the location 7, "Ottagonale":

- Registered dynamic electric field: $E = 28 \text{ V/m}$ is slightly higher than usual ($\sim 20 \text{ V/m}$).
- Experimental life energy measurement on this location (Eq. 7, LM 3) show a higher orgone energy level ($O_r = 84$) which is for 40 % ($=84/60$) higher than the usual level.

LF field energy spectra of the magnetic domain (pic.43) have a form that is usual for "open" and elevated terrains. Diagrams shown on the pic. 44 and 45, i.e. VLF frequency spectra of "E" and "H" fields, show their non-consistency - when it comes to signals amplitude - but all signals are still present in both areas. So, there is no EM anomaly at this location, but it can be noticed a some "tendency" toward resonance feature as is especially evidenced via disproportion of "E"—"H" parameters for 25 kHz signal (pic.44-45). However, although a hill form is visible, "terrain shaping" (topology) is insufficiently "regular", "symmetric", etc, - nor its structural dimensions have the appropriate proportions for triggering a stronger level of subtle energy phenomena.

Furthermore, presence of adequate water flows - as an integral part of such a mechanism - are not visible

on "H" field frequency spectrum (pic.46). However, we registered some electrical activity in the ELF domain from 1.2 Hz to 11.7 Hz (pic.47) that corresponds to "Brain wave" spectrum and to the lower part of the Schuman spectrum. Increased activity in the field of infrasound was also registered on this site. Similarly, frequency spectrum shown on the picture 48 ("MIC") clearly shows the presence of a series of harmonics in the area of 0.5 Hz to 6 Hz.

Registered electrical, magnetic and mechanical activity in similar parts of the frequency spectrum that correspond to "Brain wave" area, clearly indicate the subtle-energy specificity of this place.

Location 8: "Fortini", 21.12.2015, 16.15 h.

Measured values:

$H_{50Hz} = 4$ nT, $H = 0.6$ mG, $E = 20$ V/m, $T = 11.5$ °C, Hum = 15 %, Noi = -26 dBrel, $S_c = 10,0$; $O_r = 100,3,4,88$.

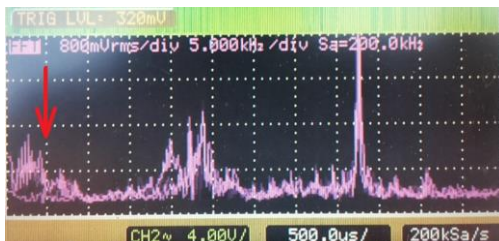
Characteristic spectrums:

49. "H" field [12.5 kHz/div], location 8:



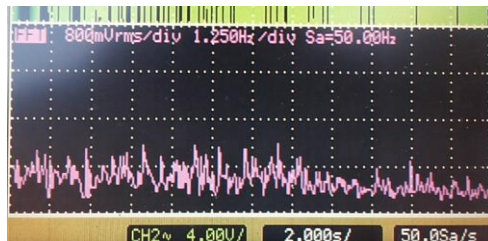
25, 42.5, 50, 95 [kHz]

50. "E" field [5 kHz/div], location 8:



2 - 9 23 42.5 [kHz]

51. "E" field [1.25 Hz/div], location 8:



0.7 ----- 8.7 [Hz]

Measurement analysis of ambient fields at the location 8, "Fortini":

- Experimental life energy measurement on this location (Eq.7, LM 3) show a higher orgon energy level ($O_r = 88$) which is for 46 % (=88/60) higher than the usual level.

All measured frequency spectrums registered here are alike, and are almost the same, as spectrums registered on the previous location - indicating that ambient field at location "Fortini" is very similar to subtle-energy state at "Ottagonale" location. This can be illustrated by "H" field frequency spectrum recording at this location (pic. 49) where one can notice the same signals as in the magnetic field frequency spectrum on the previous location (pic. 45) - except that the „H" field spectrum on this location (pic. 49) is slightly „blurred". This fact points to the terrains structure diversity (humidity ...) of these locations.

However, the "E" field frequency spectrum recording made at this location and displayed on the picture (pic. 50) is quite different from the analog recording on the previous site (pic. 46) and shows the presence of signals with unstable amplitude and frequency in the area of 2-9 kHz, i.e. increased electrical activity in this frequency area - which clearly indicates the existence of watercourses, which is – either weaker and close – or stronger and distant.

The electric field frequency spectrum recording (pic. 51) in the ELF domain show a much "calmer" and differently structured "E" field than on the previous location (pic. 47). Although a frequency spectrum of "E" field on this location is many "quieter" and "calm", it still points to a some electrical activity in the area of 0.7 to 8.7 Hz, which are "lower" and are of different spectrum form, but have similar subtle-energy specificity as it is on previous location ("Ottagonale").

Location 9: "Pietrone vicino PoS", 21.12.2015, 17.01 h.

Measured values:

$H_{50Hz} = 4$ nT, $H = 0.6$ mG, $E = 12$ V/m, $T = 9$ °C, Hum = 33 %, Noi = -26 dBrel, $S_c = 10,0$; $O_r = 100,3,4,84$.

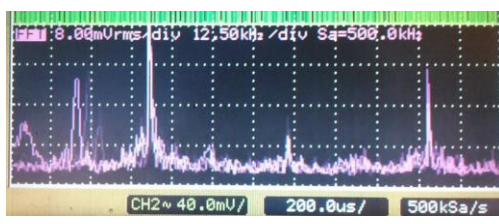
Characteristic spectrums:

52. "E" field [25 kHz/div], location 9:



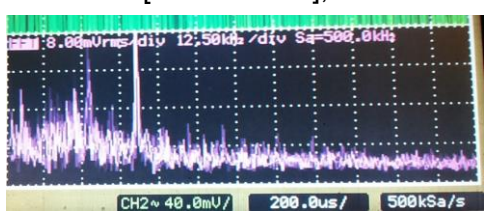
15,45,62, 85,110,127, 170,195,212 [kHz]

53. "E" field [12.5 kHz/div], location 9:



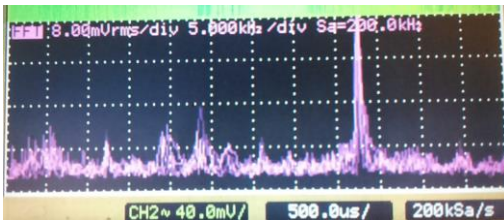
3.7, 20 42.5, 62, 85, 127 [kHz]

54. "Mic" [12.5 kHz/div], location 9:



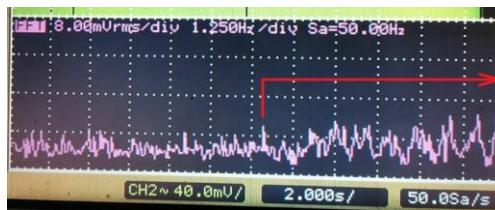
3 22 42 [kHz]

55. "E" field [5 kHz/div], location 9:



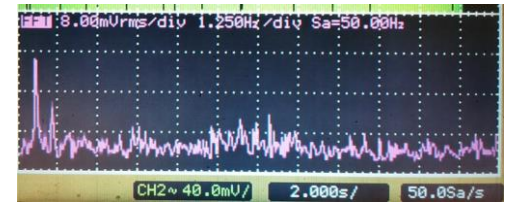
5, 12, 18, 24, 31, 42,5 [kHz]

56. "E" field [1.25 Hz/div], location 9:



9.2 15[Hz]

57. "H" field [1.25 Hz/div], location 9:



0.5, 1.1, 3.7, 7.5, 12 [Hz]

Measurement analysis of ambient fields at the location 9, "Pietrone vicino PoS":

- Registered dynamic electric field: $E = 12 \text{ V/m}$ is lower than usual ($\sim 20 \text{ V/m}$).
- Experimental life energy measurement on this location (Eq.7, LM 3) show a higher orgon energy level ($O_r = 84$) which is for 40 % ($=84/60$) higher than the usual level.

Frequency spectra recordings of "E" and "H" field on this location indicates a large number of signals and their harmonics in the whole LF range up to 300 kHz (pic. 52). Such a wide range of EM signals and a high level of EM „noise“ suggests the proximity and/or „openness“ of this location to Broadcasting stations (multiple signals and/or arithmetic harmonics). Another possibility is the proximity of power installations that generate incorrect (non-sinusoidal), pulse shaped signals, whereby the ratio of harmonics have to be exponential. Since the measurement is performed in the open air and it is not near any residential units, the first possibility is more probable.

Recordings in VLF range (pic. 53, 55) and ELF (pic. 56, 57) range - indicates a quite the opposite situation - similar to a location 5 ("Perla (Buche)"). Jet on this place, we have a many more signals (harmonics) in the LF range). "E" field frequency spectrum shown on picture 55, indicate the maximum attenuation and suppression of signals and EM smog below 35 kHz - which is a feature of monolithic structures („harmonizer“), blocks of same type of material (or cavity) or conglomerate whose componens have close and uniform values of the dielectric constant .

Frequency spectrum presented on the picture 54 („Mic“) shows a very high level of signals in the entire audio range even though the registered noise level was extremely low ($Noi = -26 \text{ dBrel}$) ? For this data I have no explanation - except a proximity of the underground facilities in which some mechanical activities take place.

"E" field recording in VLF area (pic. 55) shows the presence of signals with unstable amplitude and frequency in the area of about 5 kHz, ie. increased electrical activity in this frequency area - which clearly indicates the existence of - either weaker and close - or stronger and distant watercourses.

Frequency spectrums of electrical ("E", pic.56) and magnetic ("H", pic.57) fields in ELF range indicate a very unusual energy activities in the field of extremely low frequencies of 0.5 Hz to 12 Hz, ie. "Brain wave spectrum" - which is typical for the places where the subtle energy flows are increased. This is corroborated by the measured value of orgone energy ($O_r = 84$), which is higher than usual.

All measurements been done on this site indicate a possibility of a specific, monolithic, topologically shaped material blocks, or cavities, proximity to this place - as is also indicated in the previous analysis related to the recordings 53 and 55.

Anyway, this is a very unusual place, very suitable for mental activity of all kinds - especially under the condition to be electromagnetically isolated from the environment, eg. - by setting the „Faraday cage“ or its implementation into object/building ...

Location 10: "Hall of water", 21.12.2015, 18.30 h.

Measured values:

$H_{50Hz} = 5 \text{ nT}$, $H = 0.7 \text{ mG}$, $E = 28 \text{ V/m}$, $T = 14 \text{ }^\circ\text{C}$, $Hum = 80 \%$, $Noi = -27 \text{ dBrel}$, $S_c = 10,0$; $O_r = 100,3,4,90$.

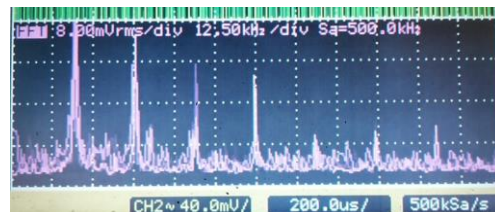
Characteristic spectrums:

58. "E" field [25 kHz/div], location 10:



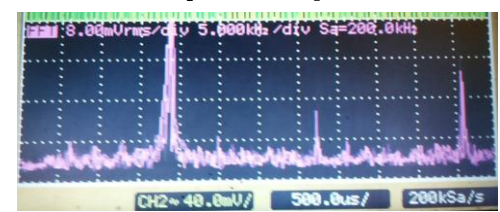
20, 58, 75, 95 [kHz]

59. "H" field [12.5 kHz/div], location 10



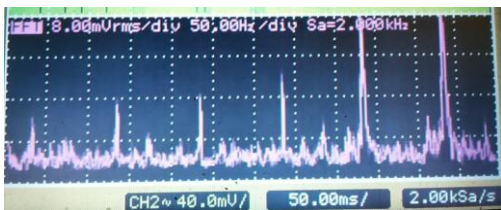
20, 37,5, 56, 75, 92, 112 [kHz]

60. "E" field [5 kHz/div], location 10:



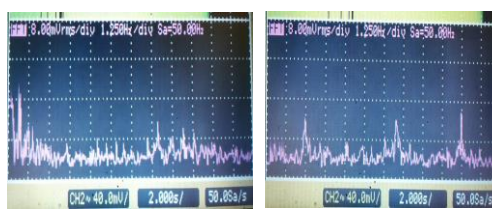
19, 37.5 [kHz]

61. "E" field [50 Hz/div], location 10:



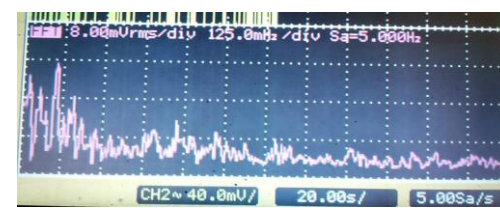
40, 135, 235, 335, 435, [Hz]

62,63 "E","H" field [1.25 Hz/div], location 10:



1.2, 8.5 11.5 2.5, 8.3 Hz]

64. "E" field [125 mHz/div], location 10



0.05-0.2, 0.25-0.75 0.82 1 [Hz]

Measurement analysis of ambient fields at the location 10, "Hall of water":

- Registered dynamic electric field: $E = 28 \text{ V/m}$ is slightly higher than usual ($\sim 20 \text{ V/m}$).
- Humidity is extremely high ($\text{Hum} = 80 \%$)
- Experimental life energy measurement on this location (Eq. 7, LM 3) show a high orgone energy level ($O_r = 90$) which is for 50 % ($=90/60$) higher than the usual level.

VLF and LF frequency spestrums of electric and magnetic fields on this site (pic.58, 59) are similar to the appropriate spestrums at the site 9. However, this signals are slightly „blured“. This is probably due to a high humidity in the room ($\text{Hum} = 80 \%$). Another difference is a fact that the LF signals on this site are significantly suppressed and weakened because of the „Faraday cage“ effect – since the room is below ground.

The presence of a large number of signals in the VLF (pic.59) and especially in the ELF (pic.61) domain is to be expected regarding a fact that this site is a residential unit with a number of electrical devices. Any device that alters the sinusoidal waveform of the voltage or current is a harmonic producer. This includes common components such as motors, transformers, fluorescent lighting, switch devices, etc.

What It may, however, be seen - is a big signal rise of 19 kHz harmonic (pic.60), which points to the "resonance" feature of this „cavity-object“. Considering that in this case we can not talk about the "electric resonance" in its classical notion - the „amplifying-effect“ reason may be are a affirmatively-interfering effects of subtle energy flows - whose presence is indicated by high orgone energy value ($O_r = 90$).

This is corroborated by the recordings of energy spectra in the field of extremely low frequencies (pic.62,63) where one can see the electrical and magnetic activity of order of a few hertz (0.05 - 12). Comparison with the archived baseline frequency spestrums shows that signals recorded here do not come from the measuring equipment. Also, it is unlikely that are generated from electrical power grids due to fact that national electric network of 220 V is used at this location, and therefore the recorded signals deemed valid.

"E" field frequency spectrum recording (pic. 64) in the field of extremely low frequency shows a significant energy activity, especially in the frequency range of a few tens of mili Hertz (0.05-0.2 Hz), which really is a very significant fact that indicate on the undisputed and exceptional subtle-energy-specificity of this location.

Location 11: "Hall of spheres", 21.12.2015, 19.20 h.

Measured values:

$H_{50\text{Hz}} = 5 \text{ nT}$, $H = 0.7 \text{ mG}$, $E = 20 \text{ V/m}$, $T = 14 \text{ }^\circ\text{C}$, $\text{Hum} = 65 \%$, $\text{Noi} = -29 \text{ dBrel}$, $S_c = 10,0$; $O_r = 100,3,4,90$.

Characteristic spestrums:

65. "E" field [25 kHz/div], location 11:



20, 57.5, 95 135 165 210 [kHz]

66. "H" field [12.5 kHz/div],location 11:



20, 37.5, 57, 75 92 112 [kHz]

67. "E" field [5 kHz/div], location 11:



10 19 22.5 38 42 [kHz]

68. "Mic" [25 Hz/div], location 11:



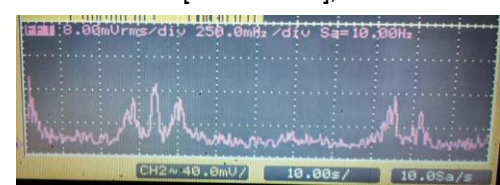
15 25 100 160 205 235 [Hz]

69. "E" field [250 mHz/div], location 11:



0.3-0.5 1 1.3 1.75 [Hz]

70. "H" field [250 mHz/div], location 11:



0.6, 0.8, 1 2.1 2.3 [Hz]

Measurement analysis of ambient fields at the location 11, "Hall of spheres":

- Registered dynamic magnetic field: $H = 0.7 \text{ mG}$ is slightly higher than usual ($\sim 0.6 \text{ mG}$).
- Registered dynamic electric field: $E = 20 \text{ V/m}$ is usual ($\sim 20 \text{ V/m}$).
- Humidity is very high (Hum = 65 %)
- Experimental life energy measurement on this location (Eq. 7, LM 3) show a high orgon energy level ($O_r = 90$) which is for 50 % ($=90/60$) higher than the usual level.

Electric and magnetic spectra that were recorded in the LF and VLF domain at this location (pic.65, 66) indicate a similar ambient fields structure registered in „Hall of water“ whose main feature is characterized by attenuation of higher frequencies in LF range and at the same time, increase of the low frequencies in VLF range. Moreover - at this point, next to the 19 kHz signal, harmonic frequency signal of 10 kHz was strongly emphasized also (pic.67), which indicates the "Halls resonant frequency" value shifting toward even lower frequencies - which probably is in accordance with the spacious position of this site in relation to the overall "subterranean temples" structure.

The frequency range of mechanical vibrations ("Mic", pic.68) indicates the presence of multiple signals in the NF audio range (15-235 Hz) that are of extremely low level but still detectable. Since the measured noise level was very low (Noi = -29 dBrel), detected signals probably originate from the ventilation system or similar facilities.

As in the previous place, a very interesting electrical and magnetic spectra was registered at this location in the field of extremely low frequency - in order of tenths of Hertz (pic.69,70).

Especially interesting are the energy activities in the fields of 0.3-0.5 Hz in electric and: 0.6,08,1 as: 2.1, 2.3 Hz in a magnetic domain that indicate an exceptional subtle-energy specificity of this place.

Location 12: "Hall of Mirrors", 21.12.2015, 20.00 h.

Measured values:

$H_{50\text{Hz}} = 4 \text{ nT}$, $H = 0.7 \text{ mG}$, $E = 20 \text{ V/m}$, $T = 23 \text{ }^\circ\text{C}$, Hum = 33 %, Noi = -6 dBrel, $S_c = 10,0$; $O_r = 100,3,4,91$.

Note 6: due to occasional lifts engine turnings on - measurements in lower frequency bands was unsuccessful in several attempts because recording of the frequency spectrum in the range of (eg.) 125 mHz (5.00 Sa / s) - requires a minimum time of 240 seconds, or 4 minutes per measurement.

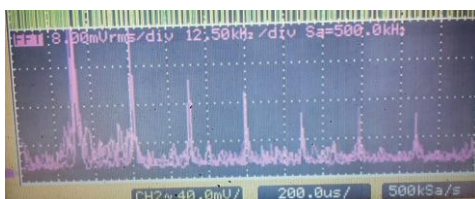
Characteristic spectrums:

71. "E" field [25 kHz/div], location 12:



20, 57, 95, 135 [kHz]

72. "H" field [12.5 kHz/div], location 12:



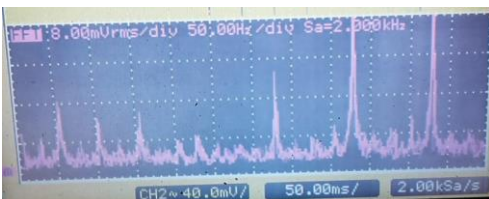
20, 37.5, 57, 75 92 112 [kHz]

73. "E" field [5 kHz/div], location 12:



7, 12, 19, 26, 32, 37 [kHz]

74. "H" field [50 Hz/div], location 12:



50,105,155 330 430 [Hz]

75. "E" field [250 mHz/div], location 12:



0.4-07 0.8-1 1.3-1.6 1.7 2.3 [Hz]

76. "H" field [250 mHz/div], location 12:



0.5 1 1.5 2 [Hz]

Measurement analysis of ambient fields at the location 12, "Hall of Mirrors":

- Registered dynamic magnetic field: $H = 0.7 \text{ mG}$ is slightly higher than usual ($\sim 0.6 \text{ mG}$).
- Registered dynamic electric field: $E = 20 \text{ V/m}$ is usual ($\sim 20 \text{ V/m}$).
- Experimental life energy measurement on this location (Eq. 7, LM 3) show a high orgon energy level ($O_r = 91$) which is for 50 % ($=91/60$) higher than the usual level.

Electric and magnetic frequency spectra in LF and VLF domain on this site (pic. 71,72,73), generally, are alike and are a very similar to energy spectra at locations 10 and 11 – but – this place is specific in its own way.

In short, this location is characterized by weakening and suppression of higher frequencies in the LF domain and gain and amplification of the VLF frequency domain.

Regarding fact that very strong 19 kHz signal is detected on this location, Likewise at a site „Hall of spheres“, we can conclude similarly that "resonance" effects on this site are expressed also. However „E“ field recording (pic.73) show that the 10 kHz signal is also detected here, but is lowered and dispersed in the range of 7-12 kHz. All this facts shows that the structure of the ambient field in „Hall of mirrors“ is very similar but still different from the previous two sites (Hall of water, Hall of spheres).

Although the AC magnetic field value for the frequency of 50 Hz was very small ($H_{50\text{Hz}} = 4 \text{ nT}$) at the measurement point (see „Note 6“ above), a presence of numerous harmonics, ie. - EM fields generated from household appliances, electrical wiring etc was detected (pic.74). So, the observed effects could be the result of this fields interference with the assumed subtle energy flows on this site and its „position“ in relation to the overall "subterranean temples" structure.

EM smog presence, that we mentioned a moment ago, that have very low but still detectable levels could be the reason for "suppression" and attenuation of signals in the field of extremely low frequencies (pic.75,76).

However in the „E“ field spectrum (pic.75) it can be noticed a some kind of signals grouping and a sort of the "wave packet" formation (0.4-07, ... 2.3 Hz) which doubtlessly indicates the presence of a subtle-energy phenomena at this location and energy activities in the field of frequency that correspond to the deepest levels of consciousness and states of deep meditation.

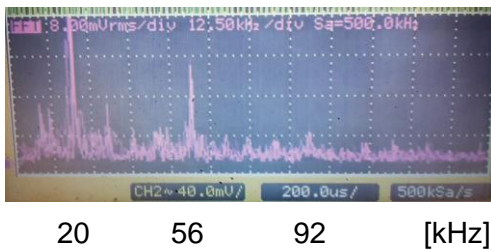
Location 13: "Sala Vitiema", 21.12.2015, 20.45 h.

Measured values:

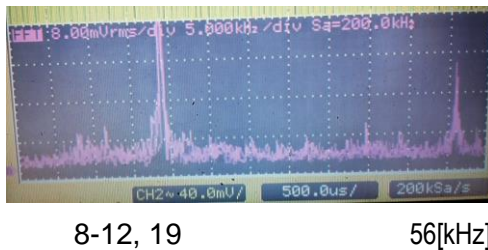
$H_{50\text{Hz}} = 4 \text{ nT}$, **H = 0.6 mG**, E = 10 V/m, T = 23 °C, Hum = 35 %, **Noi = -11 dBrel**, $S_c = 10,0$; $O_r = 100,3,4,90$.

Characteristic spectrums:

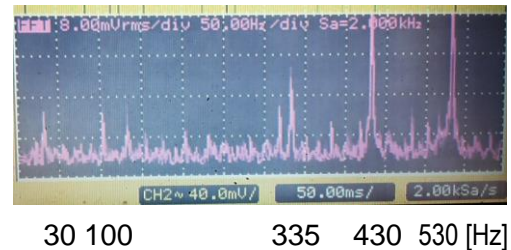
77. "E" field [12.5 kHz/div], location 13:



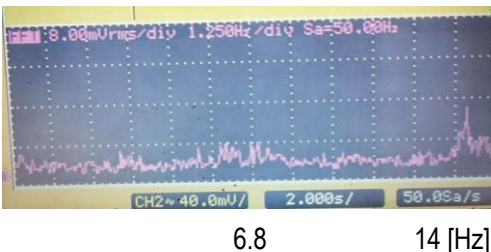
78. "H" field [5 kHz/div], location 13:



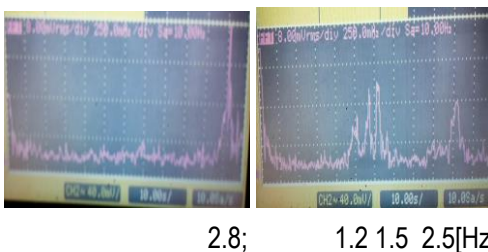
79. "H" field [50 Hz/div], location 13:



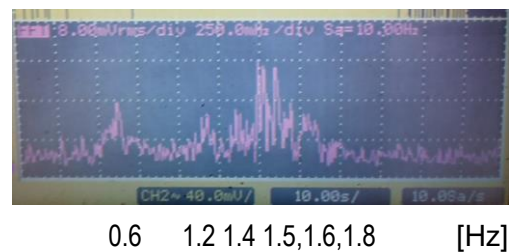
80. "H" field [1.25 Hz/div], location 13:



81. "E", "H" field [250 mHz/div], location 13:



82. "Mic" [250 mHz/div], location 13:



Measurement analysis of ambient fields at the location 13, "Sala Vitiema":

- Registered dynamic magnetic field: H = 0.7 mG is slightly higher than usual (~ 0.6 mG).
- Registered dynamic electric field: E = 20 V/m is usual (~20 V/m).
- Experimental life energy measurement on this location (Eq. 7, LM 3) show a high orgon energy level ($O_r = 91$) which is for 50 % (=91/60) higher than the usual level.

Electric and magnetic LF and VLF spectra on this site (pic. 77,78) are most similar to energy spectra at location 12, but is also specific in its own way. Hence, this location is characterized by weakening and suppression of higher frequencies in the LF domain and gain and amplification of the VLF frequency domain as it is measured at locations 10,11 and 12. As well as at the mentioned locations a numerous harmonics, ie. - EM fields from household appliances and electrical wiring was also on this location (pic.79).

„H“ field recording (pic.78) show a 19 kHz signal presence on this site as well as of the signal of 10 kHz that is lowered and dispersed in the range of 8-12 kHz. All this facts shows that the structure of the ambient field in „Hall of mirrors“ is very similar, but slightly different (specific) from „Hall of spheres“ and „Hall of mirrors“. The observed effects could be the result of same causes described in „Comment of ambient fields at the location 12.

As it can be seen on the recording of "H" field frequency spectrum in ELF domain (pic. 80) - a slightly

increased signals (6.8,14 Hz) in the field of “Schuman spectrum” were detected.

On the „E“ and „H“ fields frequency spectra recordings in the segment of extremely low frequencies (pic.81) it is clearly shown a noticeable activity in both domains in the range of 1.2 to 2.8 Hz. In the same frequency range, but in the domain of meshanical vibrations, in the field of extremely low frequency – signals in order of tenths of Hertz (0.6 - 1.8 Hz) was detected (pic.82) also.

All energy activities in the ELF spectrum in electric, magnetic and mechanical domain indicate an exceptional subtle-energy specificity of this place.

Recapitulation of measurement analysis 1-13:

1. “Ritual circle”

Electromagnetic smog signals and signals generated by measuring equipment in VLF and LF domain are significantly repressed and weakened.

Signal of 7.7 Hz that is almost equal to the first frequency from Schumann spectrum of 7.8 Hz as well as signals from the extremely low frequency range of brainwave spectrum range ($\lambda, \beta, \gamma, \delta$ waves) were recorded. This fact indicates a increased EM activity in the area which corresponds to the human meditative states.

Although here were not registered a electrodynamic vibration of longitudinal type (that generate Scalar fields), significant equipment signals distorsion and level increase in a VLF magnetic domain undoubtedly indicates the presence of a subtle energy fields presence at this location.

All measurements conducted on this location, show completely absence of negative energy forms and, at the same time, increased intensity of orgone energy. This facts speak in favor that this location is a healthy and pleasant for people and a very suitable place for mental activities.

2. “Boschetto di conoscenza”

Clear, “roughly” and “sharp” frequency EM spectrums in the VLF and LF domain indicate that this zone is a slightly resonant area. However, the absence of a measureable scalar field value can be the result of an inadequate shaping and/or structurelessness of this facility, or - of insufficient sensitivity of used equipment for concrete subtle energy form.

EM smog suppression and “clarity” of EM spectrum at this location is much smaller than on the location 1 but it exists. Especially of magnetic component. Yet, EM “clearance” at this location is satisfactory for meditative activities.

The structure of the “E” and “H” field frequency spectrum in the low frequency domain indicates the possible presence of a remote water flow of a medium intensity.

In the area of Extremely Low Frequencies was registered a moderate chaotic activity as well as in the “brainwave spectrum“ range. Possible generator of this ELF noise could be /is/ a potential water flow.

A moderate smog clearance and ELF chaotic noise make this place suitable for mental relaxation.

3. “Open Temple”

Softly and lightly “blurred” frequency spectrums in all measured ranges indicate that this area is a non-resonant domain. signals with value over 35 kHz are suppressed in a much greater extent than at the location 2.

In other words, the energetic field at this location is very similar to ambient field at location 1. Both have a structure analogous to the energy fields within the sacral objects (pyramids, churches and alike).

Energetic state on this location is very similar to ambiental field on the location 1 but – with noticeably lower (weaker) quality.

So even though measurements have not confirmed the existence of subtle energy forms on this site, the absence of negative energy radiation (smog) makes this place suitable for people.

4. “Crystal Spiral”

Dense (“condensed”) and sharp EM frequency spectrum in the domain of VLF domain, its “clarity” and EM smog suppression in LF domain are main characteristic of the energy field parameters at this location - indicating that this area has - at least - elementary resonance characteristics produced by a specific form of crystals.

Signals with frequency of 8 kHz and 10 kHz in the “E” field domain were registered on this site while the same signals were not recorded in a magnetic (“H” filed) domain.

This fact – regarding J.C. Maxwell interpretation of “Hertzian” EM waves - can be evidence of longitudinal electrodynamic vibrations that are dominant precondition for the scalar field existence [ref. 2,3].

Low measured value of Scalar field can be a result of a very low longitudinal “E”-wave intensity because of physical structurelessness and maybe of insufficient (and/or inadequate) “shaping” of this facility.

Another important argument that speaks in favor of exceptional specificity of this site are recordings of electric and magnetic fields in the ELF domain which clearly shows a presence of a strong signal of 7.8 Hz in both fields spectrums. As it is well known – 7.83 Hz is the fundamental frequency “The Schumann resonances”

- a set of spectrum peaks in the extremely low frequency (ELF) portion of the Earth's electromagnetic field spectrum. Schumann resonances are global electromagnetic resonances, generated and excited by lightning discharges in the cavity formed by the Earth's surface and the ionosphere. The presence of a very strong EM signal with frequency of 7.8 Hz witnessed a very forceful relation of this place with the planet Earth.

The fact that this spectrum is a completely analogous to "Brain wave" spectrum, i.e. the frequency spectrum generated by the human brain in various states of consciousness. This fact points to the uniqueness of this location when it comes to the area of spirituality.

VLF signals from the domain of infrasound were registered at this location also. This spectrum corresponds to the area of Schumann spectrum. Detected signals intensity is very low and probably are a result of piezoelectric effects of many and various crystals in this place.

A very special "weirdness" of this site is well illustrated with measurements which were performed before, during and after the "Interpersonal Communication" between Mr. S. O. and Mr. F.T. Recorded measurements clearly show that "electric" and "magnetic" activities in the ELF domain that corresponds to a very deep meditative states - are highest during the time of maximal Mr. S.O. concentration, or "Transpersonal communications" duration, i.e. time of his presence in the center of the "Crystal spiral".

5. "Perla (Buche)"

Energy spectra registered at this location in the VLF and LF domain are characterized by high signal sharpness. Electromagnetic "clarity" and EM smog suppression - that are a little bit weaker on this place than is on previous location - are a result of the "Faraday cage" effect.

The signal spectrums recorded in the ELF area of "E" fields indicates a certain - although very little - activity in that parts of the EM spectrum which probably is a result of resonant effects and standing wave creation. This is possible because of a high degree of EM cleanliness on this place.

When it comes to mechanical vibration, a extremely low noise (Noi = -26 dBrel) was registered on this place. However, some raised voices in the field of 20 - 45 Hz were registered. For the sound velocity of about 330 m/s corresponding resonant values are 16 and are 7.3 m, which is entirely in accordance with the real dimensions of the cave.

Measured orgone energy value is relatively low, so this place probably does not have an affirmative influence on bio-energy structures. However, considering aforementioned "cavity resonator effect" and the clearance of EM smog - this place is a very suitable for meditation and reaching a higher states of consciousness.

6. "Mantica - Tin"

Recordings of LF field energy spectra and of VLF area at this location does not indicate the presence of longitudinal electrodynamics vibration - but - relatively high orgone energy value points to the existence of subtle -energy flows of non-electromagnetic nature. However, electric field frequency spectrum recording in the ELF domain shows a certain "unevenness", i.e. a "orderliness" of the spectrum in the "signal groups" which is associated with the term: "wave packet" – that is a primary "carrier" of information in telecommunications.

The recordings of the magnetic field frequency spectrum in the field of extremely low frequency indicates the energetic activities in the field of brain-wave range.

"H" field measuring in the mili-Hertz range clearly shows the presence of a signals which indicates the subtle-energy specificity of this site because registered signals are not classical EM vibrations of transversally-vectorial type or so-called Hertzian waves.

In my opinion this signals are a electric/magnetic "shadows" of more complex and dimensionally richer form of vortexial energetic vibrations or so-called "Torsional" fields.

7. "Ottagonale"

LF field energy spectra have a form that is usual for "open" and elevated terrains. Diagrams of VLF frequency spectra show theirs non-consistency - when it comes to signals amplitude - but all signals are still present in both areas. So, there is no EM anomaly at this location, but it can be noticed a some "tendency" toward resonance feature. However, although a hill form is visible, "terrain shaping" (topology) is insufficiently "regular", "symmetric", etc, - nor its structural dimensions have the appropriate proportions for triggering a stronger level of subtle energy phenomena.

Furthermore, presence of adequate water flows - as an integral part of such a mechanism - are not visible on "H" field frequency spectrum. However, we registered some electrical activity in the ELF domain that corresponds to "Brain wave" spectrum and to the lower part of the Schuman spectrum. Increased activity in the field of infrasound was also registered on this site. Similarly, frequency spectrum of mechanical vibrations clearly shows the presence of a series of harmonics in the area of infrasound.

Registered electrical, magnetic and mechanical activity in similar parts of the frequency spectrum that correspond to "Brain wave" area, clearly indicate the subtle-energy specificity of this place.

8. "Fortini"

All measured frequency spectrums registered here are alike, and are almost the same, as spectrums registered at "Ottagonale" location - indicating that ambient field at these locations are very similar.

Fact that the „H“ field spectrum on this location is slightly „blurred“ points to the terrain's structure diversity (humidity ...) of these locations.

Electric field frequency spectrum recordings made at this location shows the presence of signals with unstable amplitude and frequency in the area of 2-9 kHz, i.e. increased electrical activity in this frequency area - which clearly indicates the existence of watercourses, which is - either weaker and close - or stronger and distant.

The electric field frequency spectrum recording in the ELF domain shows a much "calmer" and differently structured "E" field than at "Ottagonale" location. Although a frequency spectrum of "E" field on this location is many "quieter" and "calm", it still points to some electrical activity which are "lower" and are of different spectrum form, but are of similar subtle-energy specificity as it is on previous location ("Ottagonale").

9. "Pietrone vicino PoS"

Frequency spectra recordings on this location indicate a large number of signals and their harmonics in the whole LF range up to 300 kHz. Such a wide range of EM signals and a high level of EM „noise“ suggests the proximity and/or „openness“ of this location to Broadcasting stations (multiple signals and/or arithmetic harmonics). Another possibility is the proximity of power installations that generate incorrect (non-sinusoidal), pulse shaped signals, whereby the ratio of harmonics have to be exponential. Since the measurement is performed in the open air and it is not near any residential units, the first possibility is more probable.

Recordings in VLF and ELF range - indicates a quite the opposite situation - similar to a location 5 ("Perla (Buche)").

Mechanical vibrations frequency spectrum shows a very high level of signals in the entire audio range even though the registered noise level on this site was extremely low. For this data I have no explanation except a proximity of the underground cavities in which some mechanical activities take place.

"E" field recording in VLF area shows the presence of signals with unstable amplitude and frequency, i.e. increased electrical activity in specific frequency area which indicates the existence of - either weaker and close - or stronger and distant watercourses.

Frequency spectrums of electrical and magnetic fields in ELF range indicate a very unusual energy activities in the field of extremely low frequencies in "Brain wave spectrum" - which is typical for the places where the subtle energy flows are increased. This is corroborated by the measured value of orgone energy, which is higher than usual.

All measurements been done indicate a possibility of a specific, monolithic, topologically shaped material blocks, or cavities, proximity to this place.

Anyway, this is a very unusual place, very suitable for mental activity of all kinds - especially under the condition to be electromagnetically isolated from the environment, eg. - by setting the „Faraday cage“ or its implementation into object/building ...

10. "Hall of water"

VLF and LF frequency spectrums on this site are slightly „blurred“. This is probably due to a high humidity in the room. LF signals on this site are significantly suppressed and weakened, most likely, because of the „Faraday cage“ effect - since the room is below ground.

The presence of a large number of signals in the VLF and especially in the ELF domain is to be expected regarding a fact that this site is a residential unit with a number of electrical devices. Any device that alters the sinusoidal waveform of the voltage or current is a harmonic producer. This includes common components such as motors, transformers, fluorescent lighting, switch devices, etc.

What it may, however, be seen - is a big signal rise of 19 kHz harmonic which points to the "resonance" of this „cavity-object“ („Hall of water“) with this part of the EM spectrum. Considering that in this case we can not talk about the "electric resonance" in its classical notion - the „amplifying-effect“ reason may be an affirmatively-interfering effects of subtle energy flows - whose presence on this site is indicated by high measured orgone energy value.

This is corroborated by the energy spectra recordings in the field of extremely low frequencies. Comparison with the archived baseline frequency spectrums shows that signals recorded here do not come from the measuring equipment. Also, it is unlikely that they are generated from electrical power grids due to the fact that national electric network of 220 V is used at this location, and therefore the recorded signals are deemed valid.

"E" field frequency spectrum recording in the field of extremely low frequency shows a significant energy activity, especially in the frequency range of a few tens of milli Hertz, which really is a very significant fact that indicates on the undisputed and exceptional subtle-energy-specificity of this location.

11. "Hall of spheres"

Electric and magnetic spectra that were recorded at this location indicate a similar ambient fields structure registered in „Hall of water“ whose main feature is characterized by attenuation of higher frequencies in LF range and at the same time, increase of the low frequencies in VLF range. Moreover - at this point, next to the 19 kHz signal, harmonic frequency signal of 10 kHz was strongly emphasized also - which indicates the "Halls resonant frequency" value shifting toward even lower frequencies - which probably is in accordance with the spacious position of this site in relation to the overall "subterranean temples" structure.

The frequency range of mechanical vibrations indicates the presence of multiple signals in the NF audio range that are of extremely low level but still detectable. Since the measured noise level was very low, detected signals probably originate from the ventilation system or similar facilities.

As in the previous place, a very interesting electrical and magnetic spectra was registered at this location in the field of extremely low frequency - in order of tenths of Hertz that indicate an exceptional subtle-energy specificity of this place.

12. "Hall of Mirrors"

Electric and magnetic frequency spectra in LF and VLF domain on this site, generally, are alike and are a very similar to energy spectra at locations 10 and 11 – but – this place is specific in its own way. In short, this location is characterized by weakening and suppression of higher frequencies in the LF domain and gain and amplification of the VLF frequency domain.

Very strong 19 kHz signal is detected on this location, likewise at a site „Hall of spheres“ and 10 kHz signal is also detected here, but is lowered and dispersed. All this facts shows that the structure of the ambient field in „Hall of mirrors“ is very similar but still different from the previous two sites (Hall of water, Hall of spheres).

EM smog presence of numerous harmonics, ie. - EM fields from household appliances and electrical wiring was detected. That very low, but still detectable, signals could be the reason for "suppression" and attenuation of signals in the field of extremely low frequencies .

However in the „E“ field frequency spectrum it can be noticed a some kind of signals grouping and a sort of the "wave packet" formation which doubtlessly indicates the presence of a subtle-energy phenomena at this location and energy activities in the field of frequency that correspond to the deepest levels of consciousness and states of deep meditation.

13. "Sala Vitiema"

Electric and magnetic LF and VLF spectra on this site are most similar to energy spectra at location 12 –but is also specific in its own way. Hence, this location is characterized by weakening and suppression of higher frequencies in the LF domain and gain and amplification of the VLF frequency domain as it is measured at locations 10,11 and 12. As well as at the mentioned locations a numerous harmonics, ie. - EM fields from household appliances and electrical wiring was also on this location.

„H“ field recording show a 19 kHz signal presence on this site as well as of the signal of 10 kHz that is lowered and dispersed in the range of 8-12 kHz. The observed effects could be the result of EM fields generated from household appliances, electrical wiring etc, and their interference with the assumed subtle energy flows - or – regarding this site and its „position“ in relation to the overall "subterranean temples" structure.

Recording of "H" field frequency spectrum in ELF domain show a slightly increased signals in the field of "Schuman spectrum". In the same frequency range, but in the domain of mechanical vibrations, signals in order of tenths of Hertz was detected also.

All energy activities in the ELF spectrum in electric, magnetic and mechanical domain indicate an exceptional subtle-energy specificity of this place.

Conclusion.

All energy spectra registered during Magnetotelluric research mission in the "Federation of Damanhur", Piedmont, Italy, conducted in December 2015, indicate exceptionality and specificity of this area which, almost in its entirety, is characterized by weakening and suppression of higher frequencies in the LF and VLF range and gain and amplification of certain signals and/or harmonics in the VLF and ELF frequency range.

Performed measurements indicate the presence of a subtle-energy flows and the existence of specific ambiental fields at all measured locations, but still each of them expresses some quantitative and qualitative specificity appropriate to their certain structural and geometric regularity which contributes to the harmonization of ambiental energy fields that makes this locations pleasant for people.

Energy spectra structure analyze of 428 energy field frequency spectrums recordings - taken on 13 locations - indicate a certain "resonance" feature for some sites. However, the presence of scalar field existence was not registered on the majority of chosen locations. Fact that such kind of field was not detected with the S-meter (Eq.7) imply that the geometry and structure of that objects does not fully meet the necessary and sufficient

conditions for multidimensional resonance as a basic precondition for a scalar field forming. The lack of the underground watercourses - as an integral elements of the usual "subtle-energy-machine" mechanism, also reduces such possibility. Absence of a measureable scalar field value can be the result of an inadequate shaping and/or structurelessness of some facilities or - of insufficient sensitivity of used equipment for concrete subtle energy form.

Exceptions are the locations 3, 10, 11, 12 and 13 where electrical signals of 10 and 19 kHz were registered while presence of same signals were not registered in the magnetic domain. This fact - regarding J.C. Maxwell interpretation of "Hertzian" EM waves - can be evidence of electrodynamic longitudinal vibrations presence that is a main precondition for the scalar field formation and existence [ref. 2,3].

Specifically, apart from general characteristics for the whole researched area: absence of negative energy radiation and EM smog suppression, that characterize all sites, making them suitable for people, each individual location is characterized by certain specific characteristics as follows.

1. "Ritual circle" - The signal with frequency of 7.7 Hz - that is almost equal to the first frequency from Schumann spectrum of 7.8 Hz - as well as signals from the extremely low frequency range of brainwave spectrum range (λ , β , γ , δ waves) were recorded here. This fact indicates a increased EM activity in the frequency spectrum area which corresponds to the human meditative states.

This location is a healthy and pleasant for people and a very suitable place for mental activities.

2. "Boschetto di conoscenza" - The structure of the FFT spectrum in the ELF area indicates a moderate chaotic activity as well as in the "brainwave spectrum" range. Possible generator of this ELF noise could be /is/ a potential watercourses, which is – either weaker and close – or stronger and distant.

A moderate smog clearance and gentle, chaotic ELF noise make this place suitable for mental relaxation.

3. "Open Temple" - Ambiental fields on this site are very similar to "Ritual circle" location and both to the "Sacral objects energy fields", but are much lowered here.

Although the existence of subtle energy forms were not confirmed on this site, absence of negative energy radiation (EM smog) makes this place suitable for people.

4 "Crystal Spiral" - Dense ("condensed") and sharp EM frequency spectrum in the VLF domain, are typical characteristics for objects that are - at least - elementary resonant.

This is the only above-ground measured location where we have registered a signals of 8 kHz and 10 kHz in the "E" field domain, but not in "H" domain, that indicate its potentially longitudinal nature.

The presence of a very strong EM signal with frequency of 7.8 Hz and registered EM activity in "Brain wave" spectrum - witnessed a very forceful relation between this place and the planet Earth - and a real uniqueness of this location when it comes to the area of spirituality.

5. "Perla (Buche)" - High signal sharpness, electromagnetic "clarity" and EM smog suppression indicate that this place is a very suitable for meditation and reaching a higher states of consciousness.

6. "Mantica - Tin" – "E" field frequency spectrum in the ELF domain shows a certain "unevenness", i.e. a "orderliness" of the frequency spectrum, and some kind of the signals "grouping" which is associated with the term: "wave packet" – that is a primary "carrier" of information in telecommunications. This, energetic activities noticeable in the field of brain-wave range also, are a electric/magnetic "shadows" of more complex and dimensionally richer form of vortexial energetic vibrations or so-called "Torsional" fields that are present on this site.

7. "Ottagonale" – There is no EM anomaly registered at this location - but - electrical, magnetic and mechanical activity in parts of the frequency spectrum that correspond to "Brain wave" area, and to the lower part of the Schuman spectrum clearly indicate the subtle-energy specificity of this place pleasant for people.

8. "Fortini" – Ambient field at this location is very similar to field at the location 7. Yet, slightly „blurred“ spectrums on this site points to the terrains structure diversity (humidity, permittivity, etc.) of these locations. EM signals that are „lower“ and are of different spectral form indicate a subtle-energy specificity of this place regarding previous location.

Signals with unstable amplitude and frequency in the area of 2-9 kHz clearly indicates the existence of watercourses, which is – either weaker and close – or stronger and distant.

Although energy anomalies were not registered neither here – it can be said that this place is pleasant for people also.

9. “Pietrone vicino PoS” All measurements been done on this site indicate a possibility of a specific, monolithic, topologically shaped material blocks, or cavities, near to this place.

Anyway, this is a very unusual place, very suitable for mental activity of all kinds – especially under the condition to be electromagnetically isolated from the environment, eg. - by setting the „Faraday cage“ or its implementation into object/building ...

10. “Hall of water” - The presence of a large number of signals in the VLF and especially in the ELF domain is to be expected regarding a fact that this site is a residential unit with a number of electrical devices.

Strong 19 kHz signal registered here, points to the "resonance" feature of this „cavity-object“. Considering fact that, in this case, we can not talk about the "electric resonance" in its classical notion - the „amplifying-effect“ reason (cause) may could be a affirmatively-interfering effects of subtle energy flows that come from the Earth's interior.

Significant energy activity in the frequency range of a few tens of mili Hertz indicate to the undisputed and exceptional subtle-energetic specificity of this location.

11. “Hall of spheres” - Electric and magnetic spectra that were recorded at this location indicate a similar ambient fields structure registered in „Hall of water“. Moreover - at this point, next to the 19 kHz signal, a very strongly emphasized harmonic 10 kHz signal was registered here also.

Registered EM activities of extremely low frequency - in order of tenths of Hertz- indicate an exceptional subtle-energy specificity of this place.

12. “Hall of Mirrors” – Energetic spectrums registered on this site, generally, are alike and are a very similar to energy spectra registered at locations 10 and 11 – but - this place is specific in its own way.

Very strong 19 kHz signal was detected on this location, likewise at a site „Hall of spheres“. Furthermore a 10 kHz signal was detected here also, but is lowered and dispersed.

EM smog presence of numerous harmonics, ie. - EM fields arising from household appliances and electrical wiring likely are the cause of signals „grouping“ and a some sort of the "wave packet" formation - which doubtlessly indicates the presence of a subtle-energy phenomena existence at this location and energy activities in the part of frequency spectrum that corresponds to the deepest levels of consciousness and states of deep meditation.

13. “Sala Vitiema” - Electric and magnetic LF and VLF spectra on this site are most similar to fields measured at locations 10,11 and 12. As well as at the mentioned locations a numerous harmonics, ie. - EM fields from household appliances and electrical wiring was also detected on this location.

At this point it was found a 19 kHz signal presence as well as of the 10 kHz signal that is lowered and dispersed in the range of 8-12 kHz.

Recording of “H” field frequency spectrum in ELF domain show a slightly increased signals in the field of “Schuman spectrum”. In the same frequency range, but in the domain of mechanical vibrations, signals in order of tenths of Hertz was detected also.

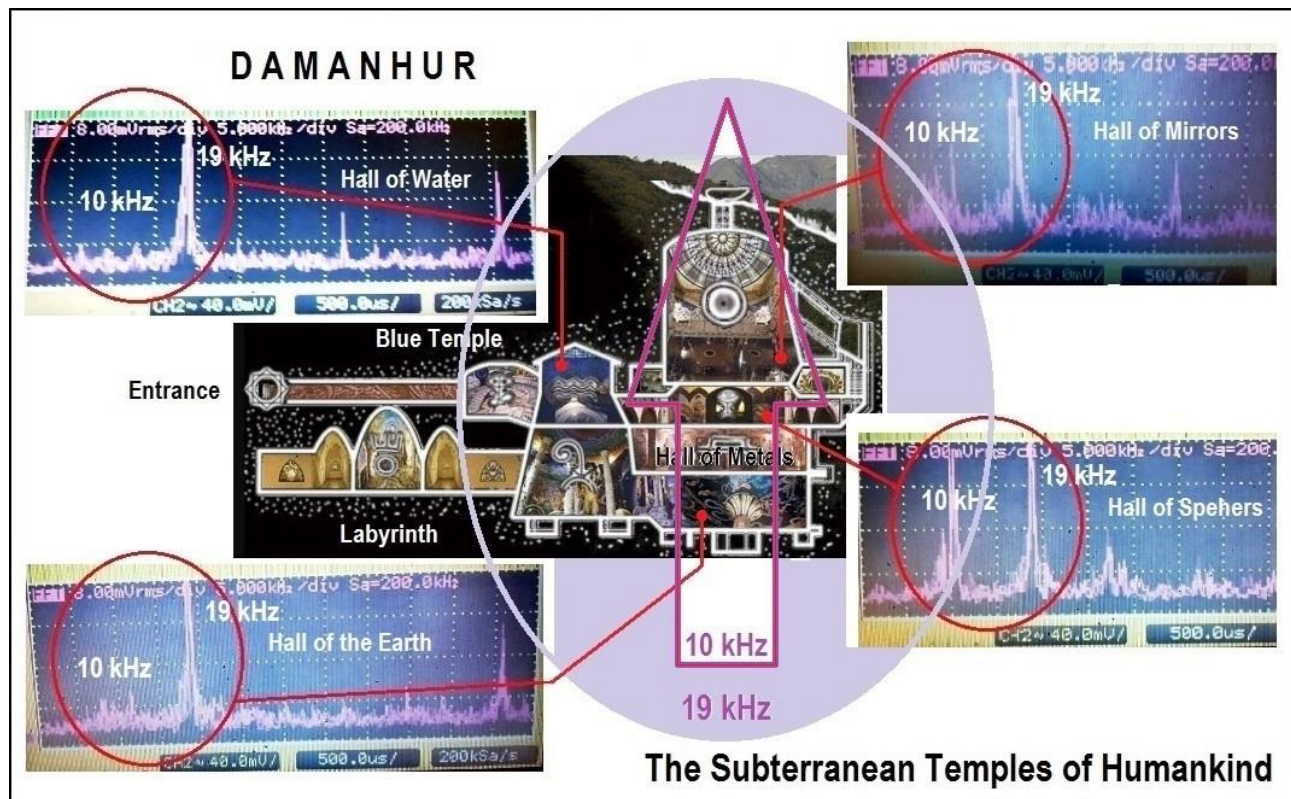
All energy activities in the ELF spectrum in electric, magnetic and mechanical domain indicate an exceptional subtle-energy specificity of this place.

Final considerations

As a very specific peculiarity of our researches in “Federation of Damanhur” we emphasize the fact that electric field signals of 10 kHz and 19 kHz were detected only at one of “aboveground” locations: “Crystal Spiral” (4) and at all four underground sites: “Hall of water” (10), “Hall of spheres” (11), “Hall of Mirrors” (12), and at “Sala Vitiema” (13). It is very significant that these signals were registered only in “E” field domain and were not registered in a magnetic domain.

This fact is inconsistent with the expectations for the classic, transverse-vectorial form of electromagnetic fluctuations, the so-called “Hertzian” EM waves, that have a both “E” and “H” components and indicates the possibility that registered phenomenon could be a longitudinal electrodynamic vibration /ref. 2,3/, so the phenomenon that is quite analogous to the concepts of scalar energy fields.

Bearing in mind that the signal of 10 kHz was not detected at the site 10, “Hall of water”, while 19 kHz signal was detected at all subterranean measuring points, and taking into account the spatial arrangement of subterranean temples - we can, with high probability, assume the “energy field structure” of the subterranean temples shown in the figure below.



What we suggest as a “energy field structure” in “Temples of Humankind” is a Longitudinal electrodynamic “beam” (\uparrow) with vibrational frequency of 10 kHz, that we detect and measure as a lower-dimensional energetic form, a some kind of "electric shadow", of a real, subtle energetic field of scalar type, which generates a pulsating Torsion fields, i.e. 3-dimensional standing waves - or - "spherical" vibrations in a "breathing" mode. In the same way, the "second scalar field sphere" (\bullet), can be detected and measured in its "low dimensional form" - some kind of its “energetic shadow” - as a Longitudinal electrodynamic vibration i.e. “E” field signal with frequency of 19 kHz.

So, “central” (first) scalar field sphere covers the locations 11, 12 and 13 with similar ambient field qualities. As it can be seen on the picture above, location 10 is situated in “second sphere” - which means a slightly different subtle-energy qualities.

The previously mentioned fact that the 10 kHz signal was detected, exclusively, in the "E" field range and only at the location 4, points to the very strong “energetic connection” between “Crystal Spiral” (object/site) and the "Temples of Humankind" !

From the aspects of the Esoteric physics /ref.4/ The reason why Damanhur was founded in this area is because of the presence of four Synchronic Lines², which can be contacted through the Temples of Humankind.

As a special curiosity, remains the fact that the EM phenomena in the form of electrodynamic vibrations of 10 and 19 kHz were registered just and exactly at this location.

Longitudinal electrodynamic beam, detected by our equipment as “E” field signal of 10 kHz, can be generated by appropriate piezoelectric mechanisms or by telluric currents through specific blocks of a specific, monolithic, topologically shaped material blocks, or cavities, in the interior of the Earth. That could be a scientific explanation for the ambient fields subtle-energetic specificity of „Temples of Humankind“.

Belgrade, 01.01.2016.

Goran Marjanovic, BscE.

² The Synchronic Lines are great rivers of energy that surround our planet and connect it to the universe. Along the synchronic lines the evolution of life and of human being develops and the main events, which are able to synchronically orient forms and their transformation, grow thick. They are the “highways” on which thought—forms and ideas travel, through which incarnating souls (organised complexity), transit. These lines are connected to each other and cross the whole universe. They create a communication net between worlds, stars and galaxies where the complexity of life is present.

The synchronic lines of our planet are organised into a network comprising nine vertical Lines and nine horizontal Lines, that the ancient Chinese called the ‘Back of the Dragon’.

The reason why Damanhur was founded in the Canavese area of Italy is precisely because of the presence of four Synchronic Lines, which can be contacted through the Temples of Humankind. This region is one of two places on the planet where four Synchronic Lines converge; the other one is in Tibet.

References:

[1] H. A. Pierce and D. B. Hoover (Electrical Survey of the Honey Lake Valley, Lassen County, California and Washoe County Nevada. US Geological Survey Box 25046, MS 964, DFC, Lakewood, CO 80225].
pubs.usgs.gov/of/1988/0668/report.pdf ,1988

[2] K. J. van Vlaenderen, A. Waser: "Generalization of Classical Electrodynamics to Admit a Scalar Field and Longitudinal Waves", Hadronic Journal 24, 609, 2001

[3] Wang, Haifeng, Shi Luping, Boris Luk'yanchuk, Sheppard Colin, and Chong Tow Chong, "Creation of a Needle of Longitudinally Polarized SECTION Art, Religion, History, Culturology, Philosophy ARSA - Advanced Research in Scientific Areas -The 3rd year of Advanced Research in Scientific Areas <http://www.arsa-conf.com> Advanced Research in Scientific Areas December, 1. - 5. 2014 - 250 - Light in Vacuum Using Binary Optics." Nature Photonics, Vol. 2, 501, - 505, 2008

[4] Carlo Dorofatti, "The Esoteric Physics", http://www.horuscentre.org/images/Esoteric_Physics.pdf